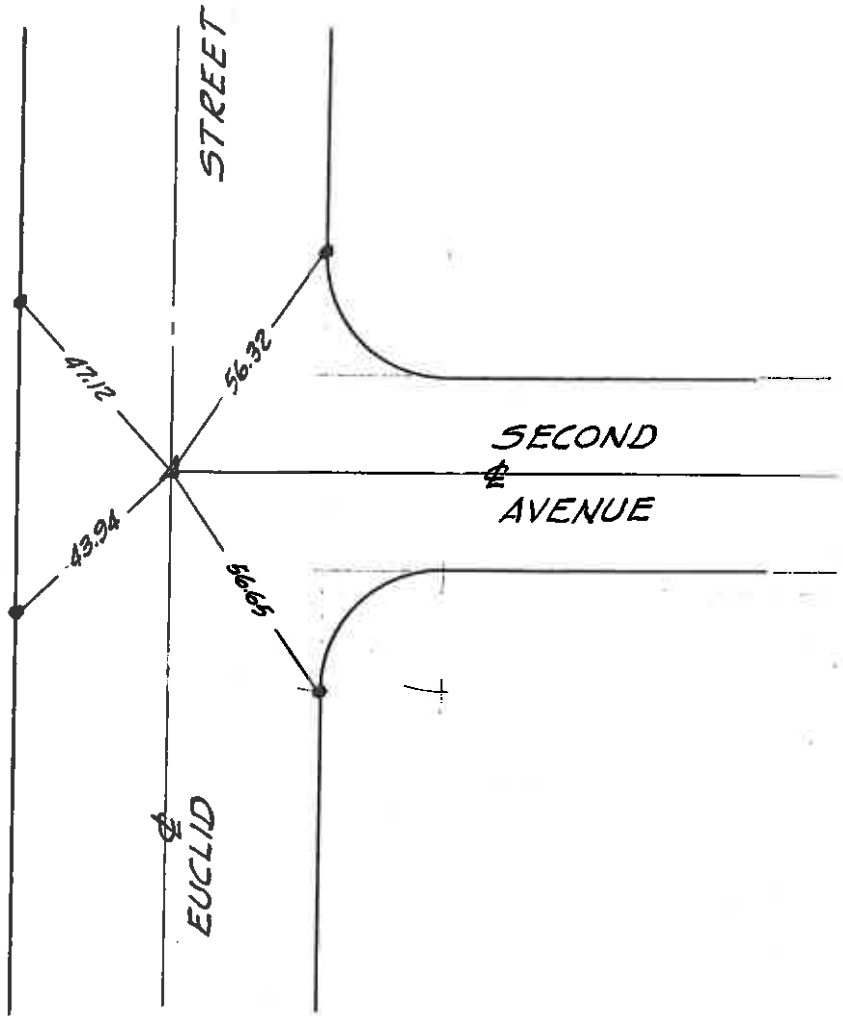




First Avenue  
pg 6



Cut notches in new  
manhole ring  
(Fnd. notches in old  
manhole ring)

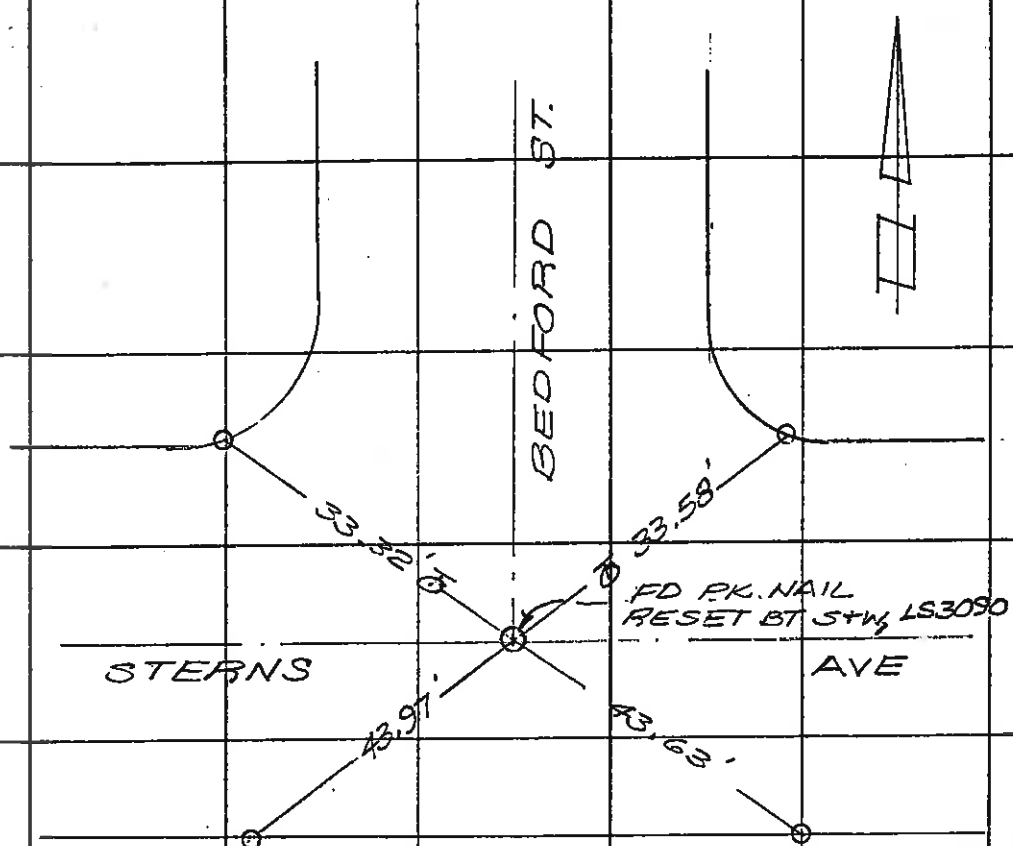
Electric Avenue  
pg 4

SURVEY OF STERNS AV. & BEDFORD ST. F. B. Pg. \_\_\_\_\_

SURVEY BY ROBERT WADA & ASSOC TR. No. \_\_\_\_\_

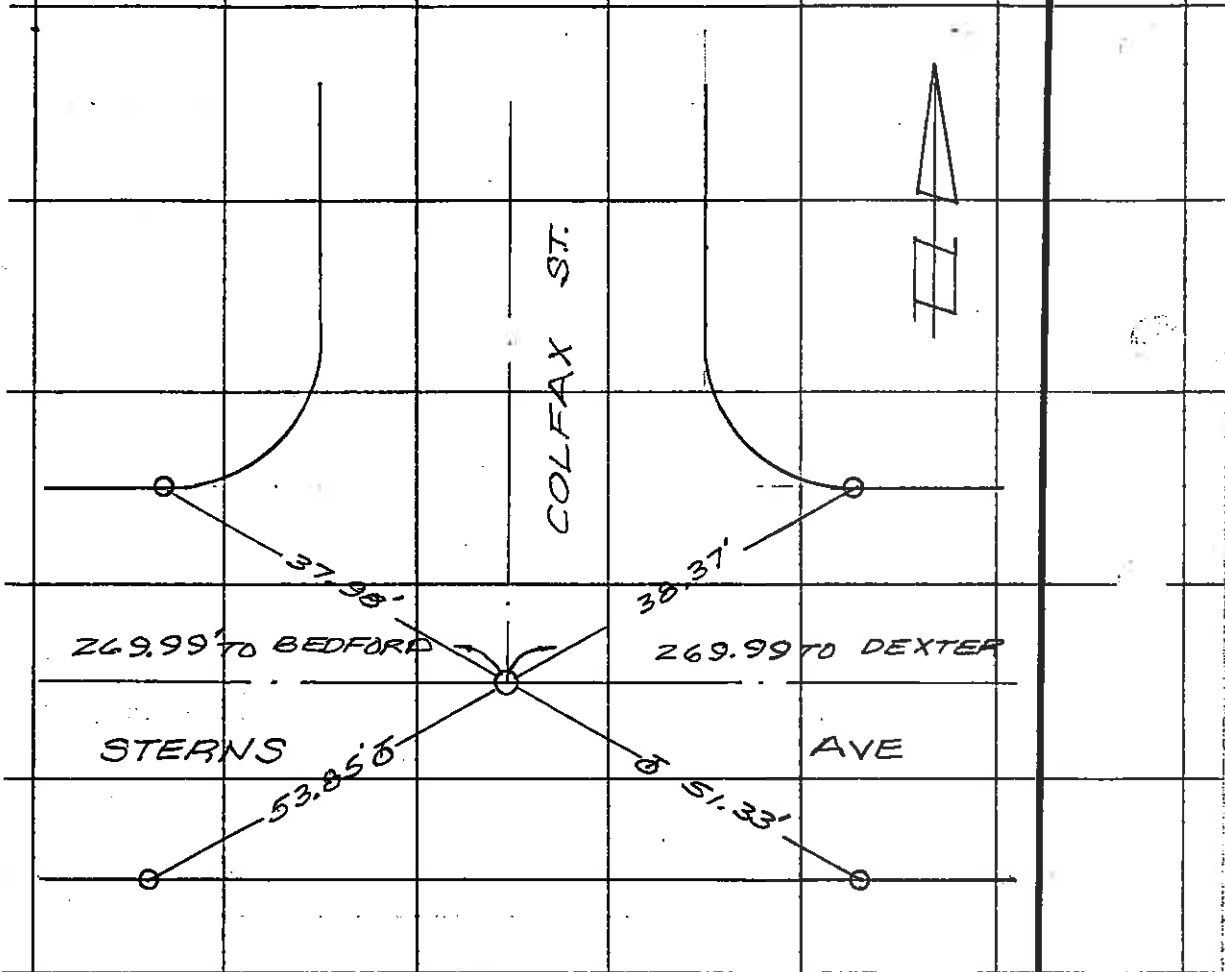
DATE 7-22-88 JN 1722

SO. CALIF. BLUE PRINT CO.



O = SET LYT ON T.C.

F. B. \_\_\_\_\_ Pg. \_\_\_\_\_ SURVEY OF STERNS AV - COLFAX ST.  
 TR. No. \_\_\_\_\_ SURVEY BY ROBERT WADA & ASSOC  
 DATE 7-22-88 JN 1722



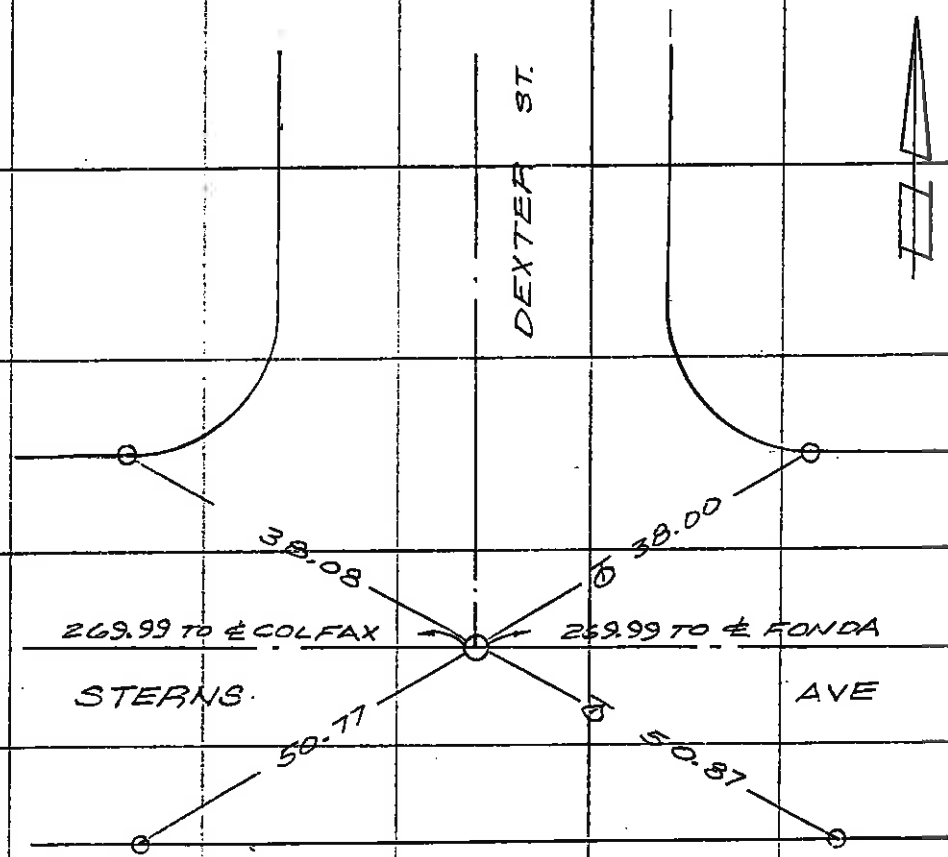
○ = SET L+T ON TC.  
 ○ = FD NOTHING PRIOR TO CONST.  
 SET BT S+W, LS 3090 BY PRORATE.  
 BTW E BEDFORD + E. LINE TR. NO. 1789

SURVEY OF STERNS AVE - DEXTER ST. F. B. \_\_\_\_\_ Pg. \_\_\_\_\_

SURVEY BY ROBERT WADA & ASSOC TR. No. \_\_\_\_\_

DATE 7-28-88 JN 1722

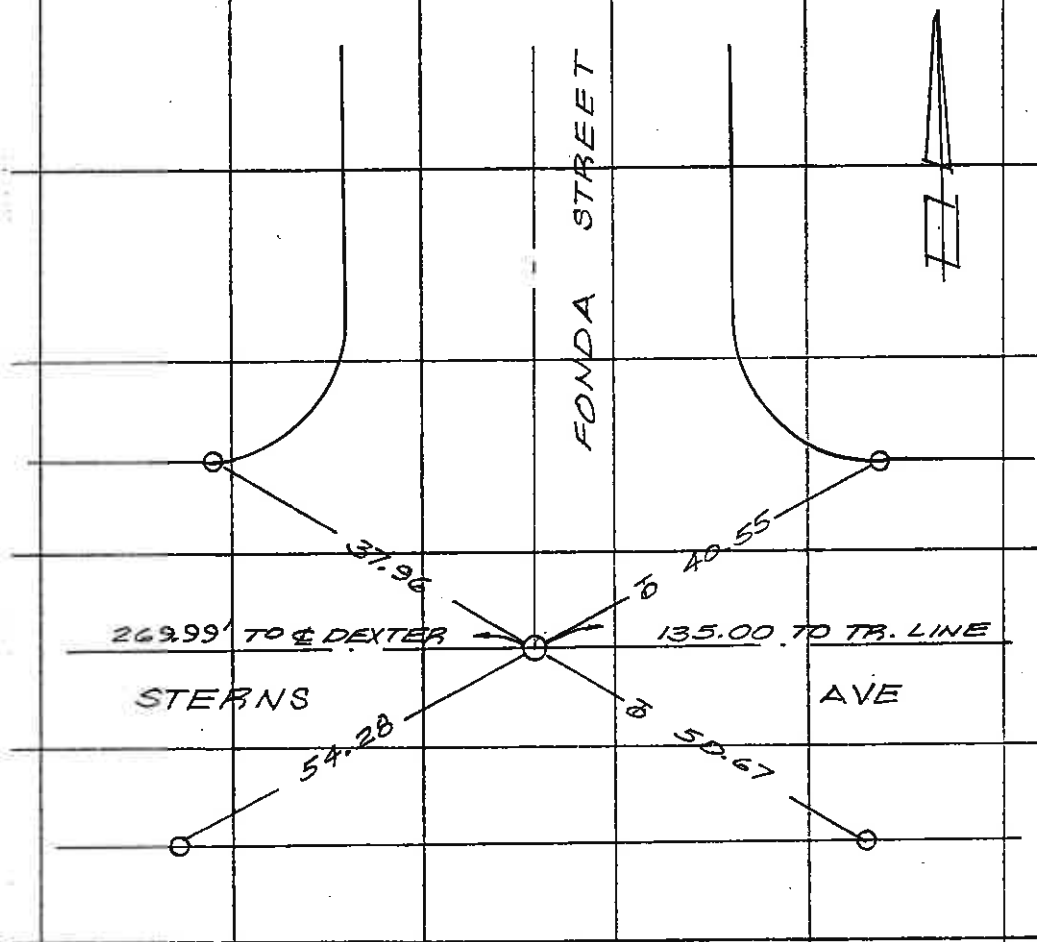
SO. CALIF. BLUE PRINT CO. -



○ = SET LYT ON TC

○ = FD NOTH. PRIOR TO CONST., SET BT.S.TW,  
LS 3090 BY PRORATE BTW. E BEDFORD  
& E. LINE OF TR. NO. 1789.

F. B. \_\_\_\_\_ Pg. \_\_\_\_\_ SURVEY OF STERNS AVE - FONDA ST.  
 TR. No. \_\_\_\_\_ SURVEY BY ROBERT WADA + ASSOC  
 DATE 7-28-88 JN. 1722



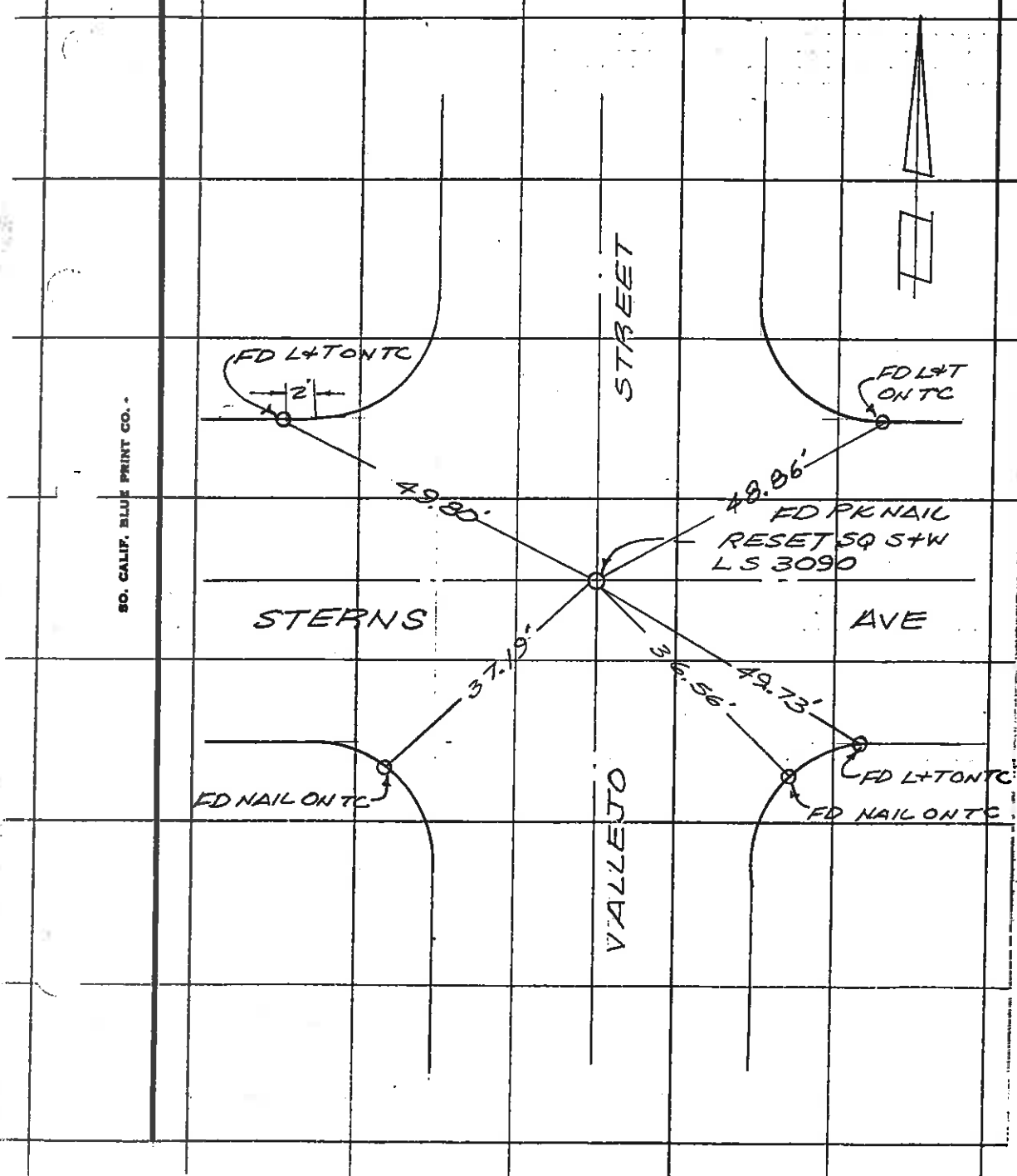
- = SET L+T ON T.C.
- = FD NOTH. PRIOR TO CONST., SET BT S+W, LS 3090 BY PRORATE BTW & BEDFORD T.E. LINE OF TR. NO. 1789

SURVEY OF STERNS AV - VALLEJO ST. F. B. Pg.

SURVEY BY ROBERT WADA + ASSOC TR. No.

DATE 7-18-88 JN 1722

SO. CALIF. BLUE PRINT CO.





WARNE ST.

WARD ST.

SUNSET ST.

AVE.

FRANCIS

ST.

±1' 0" B.C.R.

±1' 0" B.C.R.

±1' 0" B.C.R.

±1' 0" B.C.R.

ON M.H. 10+24.27 PER CONTROL SURV

ON M.H. 7+26.31 PER CONTROL SURVEY

X = SET LET

5+20.98 PER CONTROL SURVEY

SET LET ±1' 40" 0" B.C.R.

40.92'

46.54'

39.14'

35.26'

38.79'

39.09'

39.24'

39.36'

40.77'

39.51'

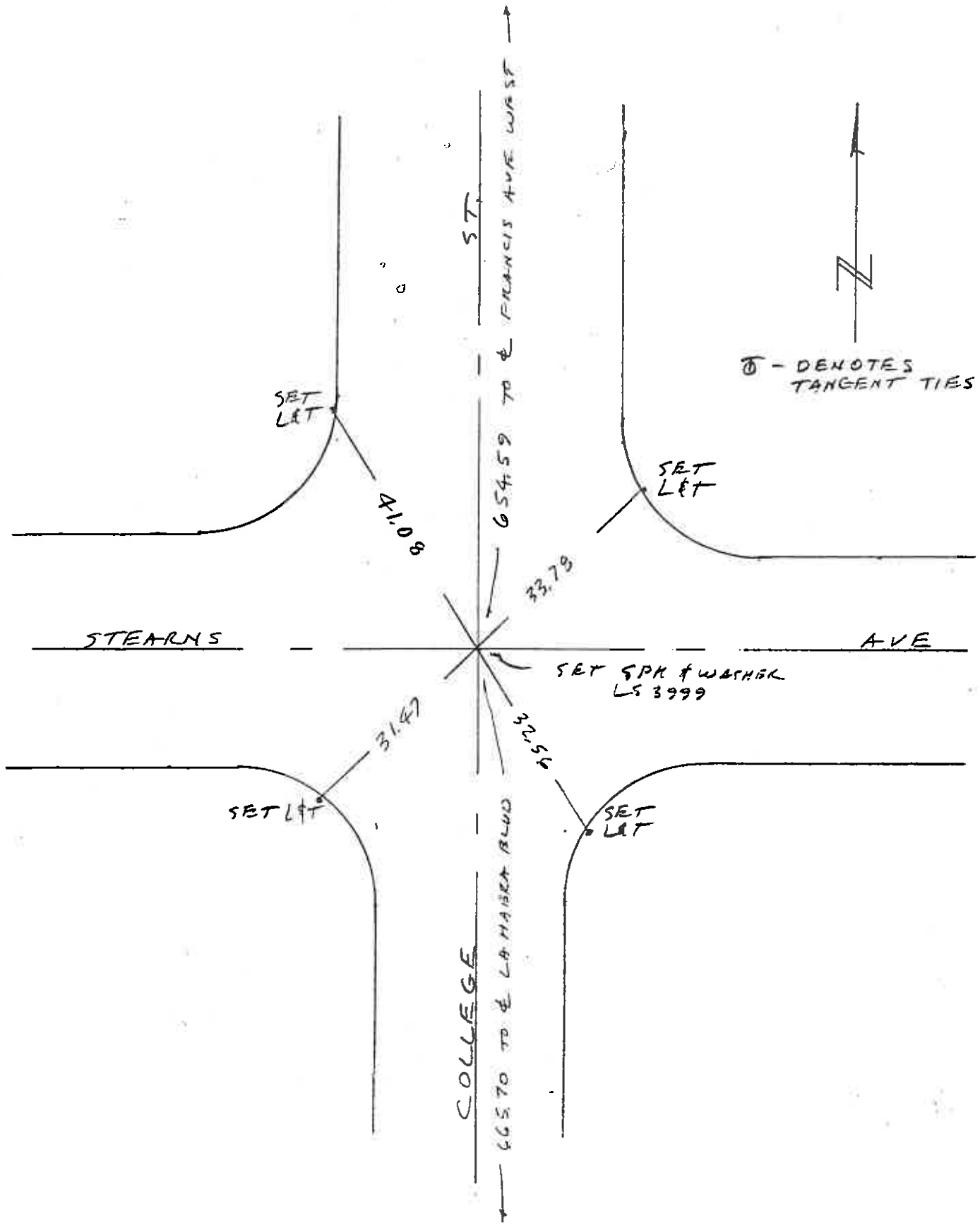
37.91'

39.15'

ENGINEERING, INC.

P-13-81

JODKINS AGUILAR





LA HABRA

BLVD.

B.M. "4" in Turb.  
Elev. 316.34

32+76.98 Not B.M.

SUNSET

33.40'  
16.40' 17'

33+02.46

Set P.K.

ST.

33+27.24

This P.K. not meant  
to be on  $\frac{1}{2}$  but is  
on Prod. of "4" and Nail

0.28'

27.43'

33+02.50

27.58'

Ed. Nail

89° 55' Mea.  
This Angle Mea. from  
Transit Line to "4"

Fd "4"

33+02.54



FROM  
M.M-E-3

**TICE ENGINEERING SERVICES**

17611 Yorba Linda Blvd.  
Yorba Linda, California 92686

JOB NO. 861005 SHT. 4 OF 4

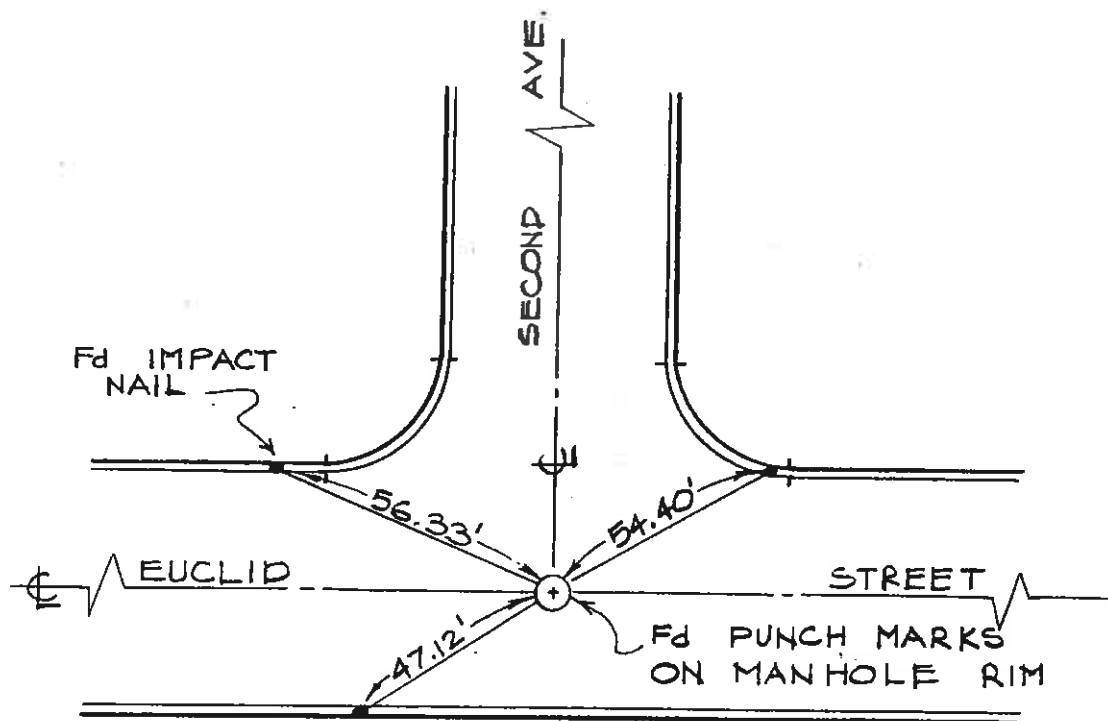
PROJECT 2<sup>ND</sup> AVE. LA HABRA

DATE 3/10/87 BY D.W.

**CITY OF LA HABRA SECOND AVENUE  
CENTERLINE TIES**



NO SCALE



- SET LEAD AND BRASS NAIL IN TOP OF CURB UNLESS NOTED.

**TICE ENGINEERING SERVICES**

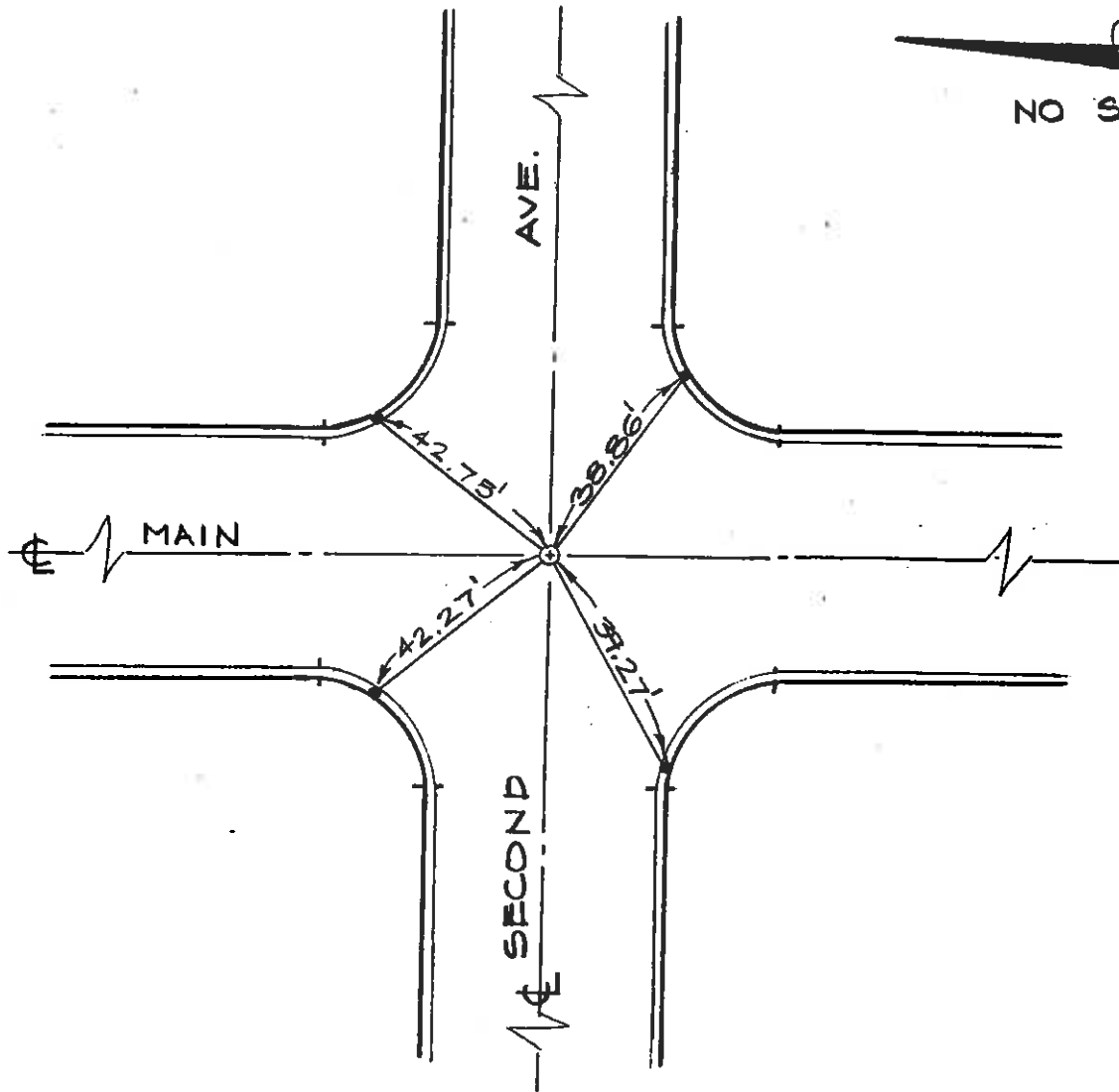
17611 Yorba Linda Blvd.  
Yorba Linda, California 92686

JOB NO. 861005 SHT. 3 OF 4

PROJECT 2<sup>ND</sup> AVE, LA HABRA

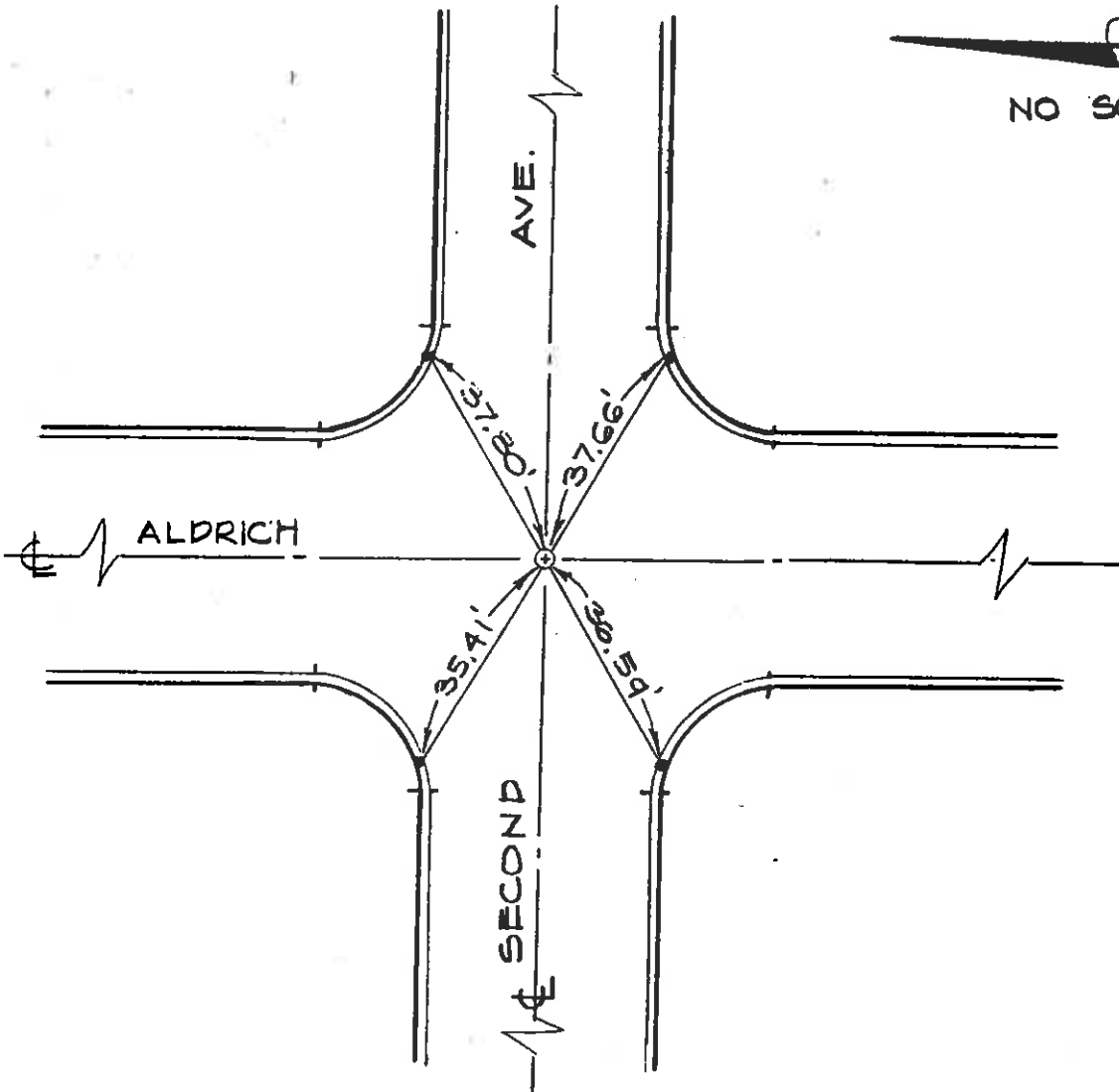
DATE 3/10/87 BY D.W.

**CITY OF LA HABRA CENTERLINE TIES SECOND AVENUE**



- SET 6" SPIKE WITH WASHER "L.S. 5196"
- SET LEAD AND BRASS NAIL IN TOP OF CURB UNLESS NOTED.

**CITY OF LA HABRA CENTERLINE SECOND AVENUE TIES**



- SET 6" SPIKE WITH WASHER "L.S. 5196"
- SET LEAD AND BRASS NAIL IN TOP OF CURB UNLESS NOTED.

et

# TICE ENGINEERING SERVICES

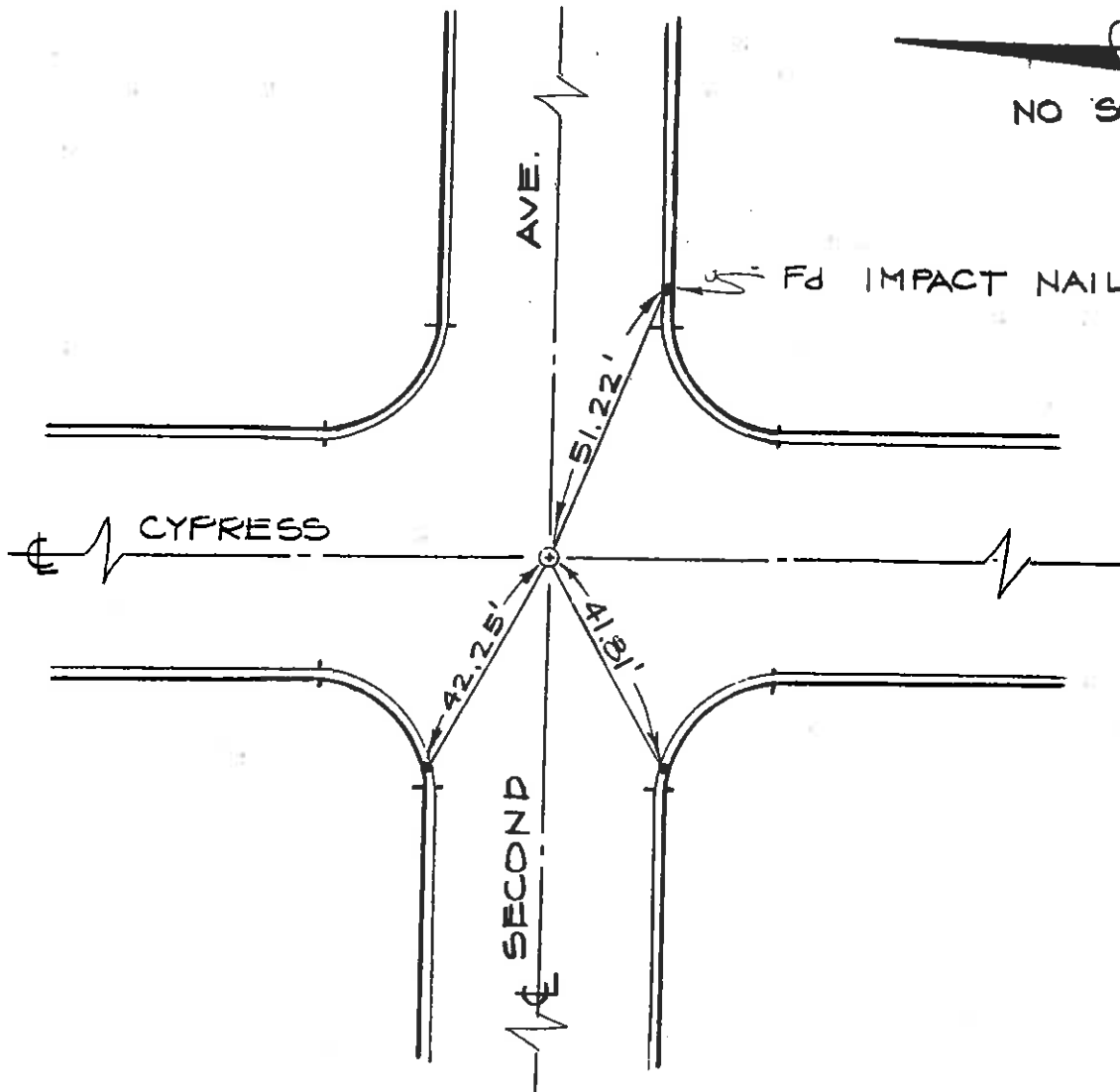
17611 Yorba Linda Blvd.  
Yorba Linda, California 92686

JOB NO. 861005 SHT. 1 OF 4

PROJECT 2<sup>ND</sup> AVE, LA HABRA

DATE 3/10/87 BY D.W.

## CITY OF LA HABRA CENTERLINE TIES SECOND AVENUE



- SET 6" SPIKE WITH WASHER "L.S. 5196"
- SET LEAD AND BRASS NAIL IN TOP OF CURB UNLESS NOTED.

ORA 72 75/11.4  
35743 M

WHITTIER BLVD TIES PRIOR TO  
RESURFACING

4-21-78  
WINTER PW

15 36

BLK 6448 MOD 98

REF A10.001-74  
A080720-23

MCDONALDS

FD RS  
ON TC

FD RS  
ON TC

WHITTIER

641.02 EDM

BLVD

180.99 EDM

FD SITE W O.S.S.L.Y  
O.I'DP

FD SITE W RCE B244  
O.I'DP

TO ZUTIA (E) MADR ST

TO PG 16  
S. T&W POT

FD RS  
ON TC

FD L&T  
NO REF.

179° 59' 34" MEAS.

0015

78-066

TO PG 14

(2)

ORA 72 75/11.4  
35743M

WHITTIER BLVD TIES PRIOR TO  
RESURFACING

4.21.78  
WINTER PW

16 36

MCDONALDS  
HAMBURGERS

BLK 6448 MOD 98

REF A10-001-74  
A0K072C-24.75

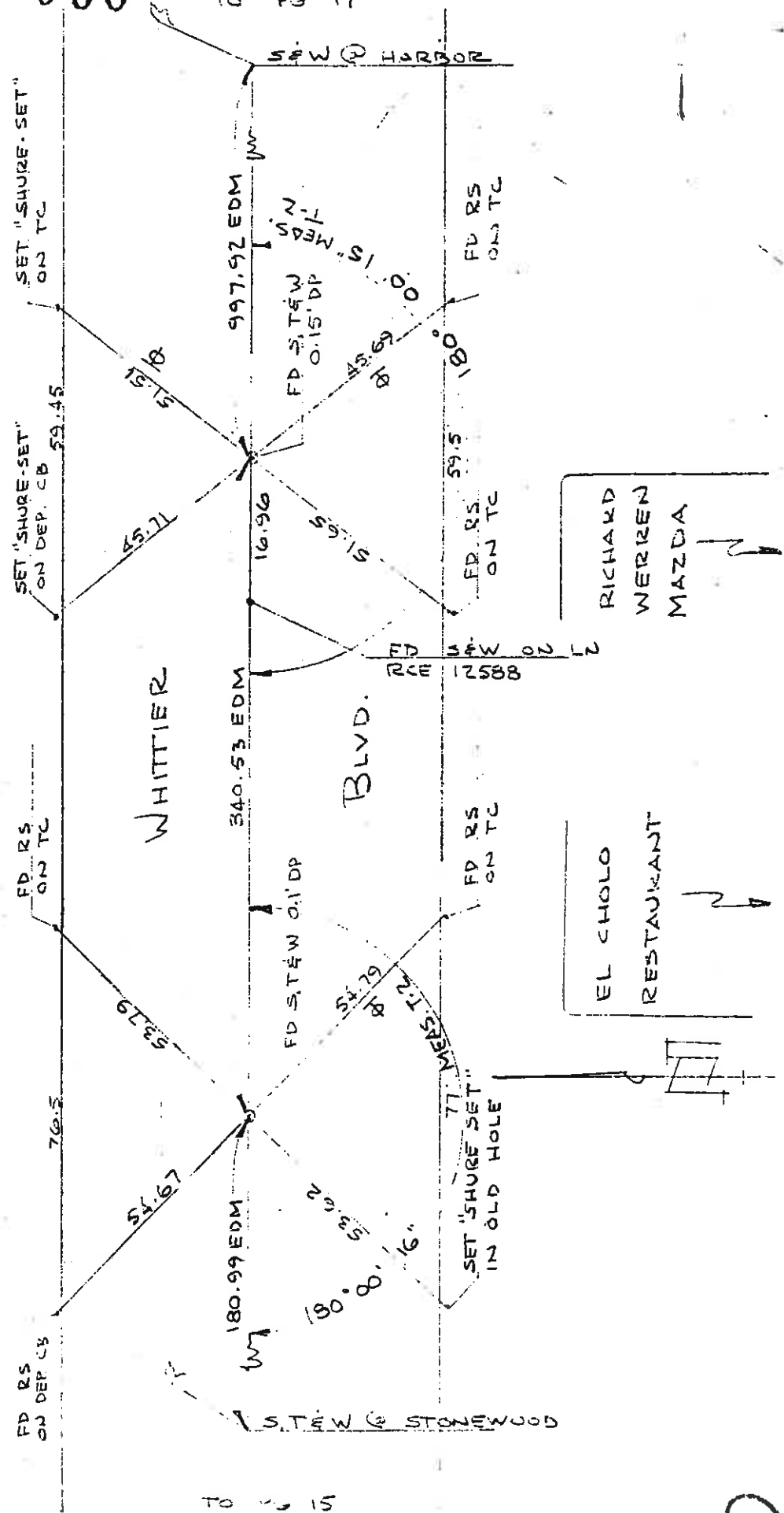
921 WHITTIER BLVD

78-066

TO PG 15

TO PG 17

C016



3

ORA 72 7.5/11.4  
35743M

WHITTIER BLVD TIES PRIOR TO  
RESURFACING

4-21-78  
WINTER PW

17 36

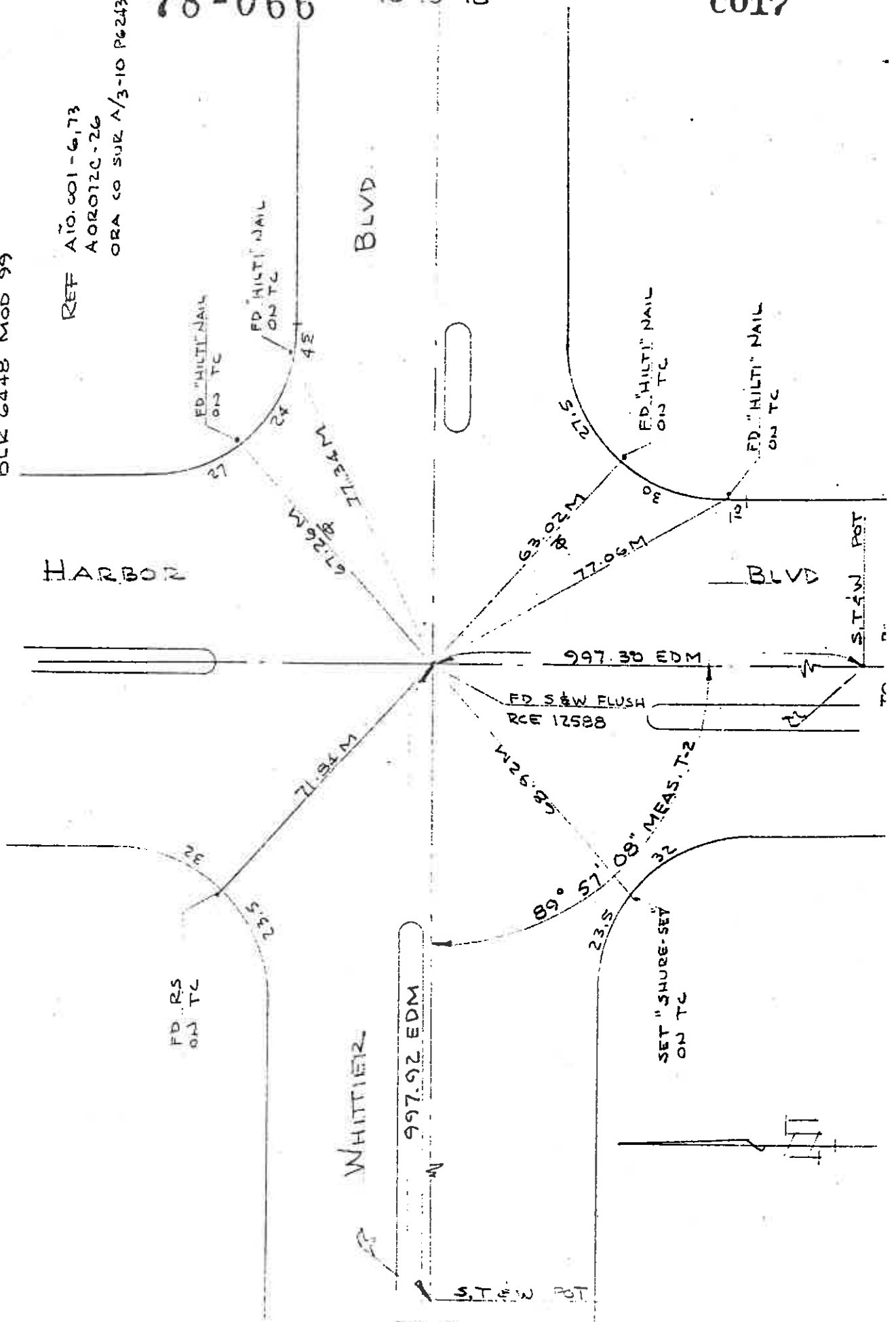
BLK 6448 MOD 99

REF AIO.001-6,73  
AOR012C-26  
ORA CO SUR A/3-10 P6243

78-066

TO PS 18

C017



TO PG 16

(2)



12 36

5-15-78  
WINTER PW

HARBOR BLVD TIES PRIOR TO  
RESURFACING

7.5/11.4

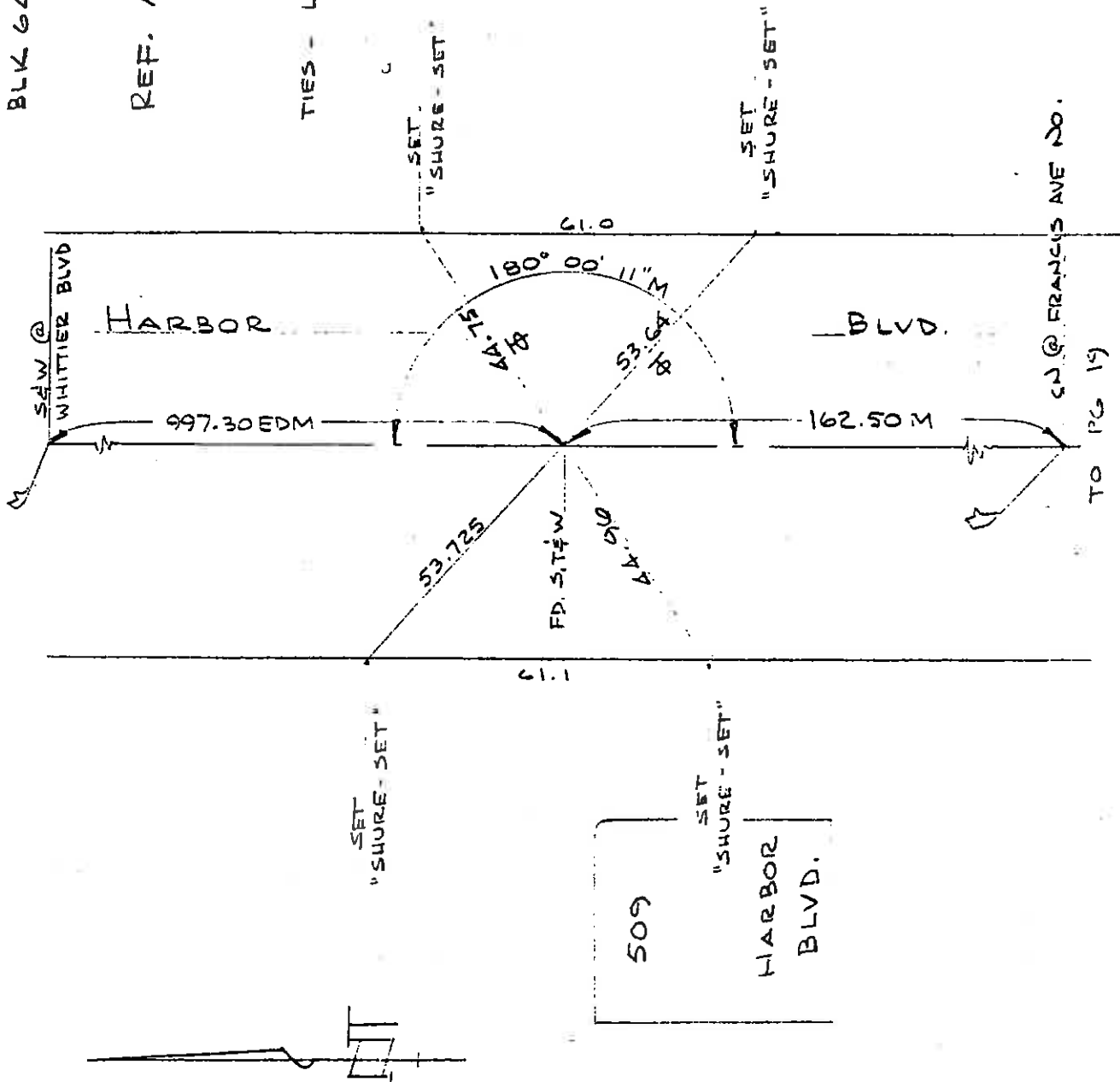
OKA 72

35743M

BLK 6448 MOD 89

REF. A10.001-73

TIES - LEVEL CHAINED



509  
HARBOR  
BLVD.

3

ORA 72 35743M

7.5/11.4

HARBOR BLVD TIES PRIOR TO RESURFACING

9-12-78 WINTER

24

PW

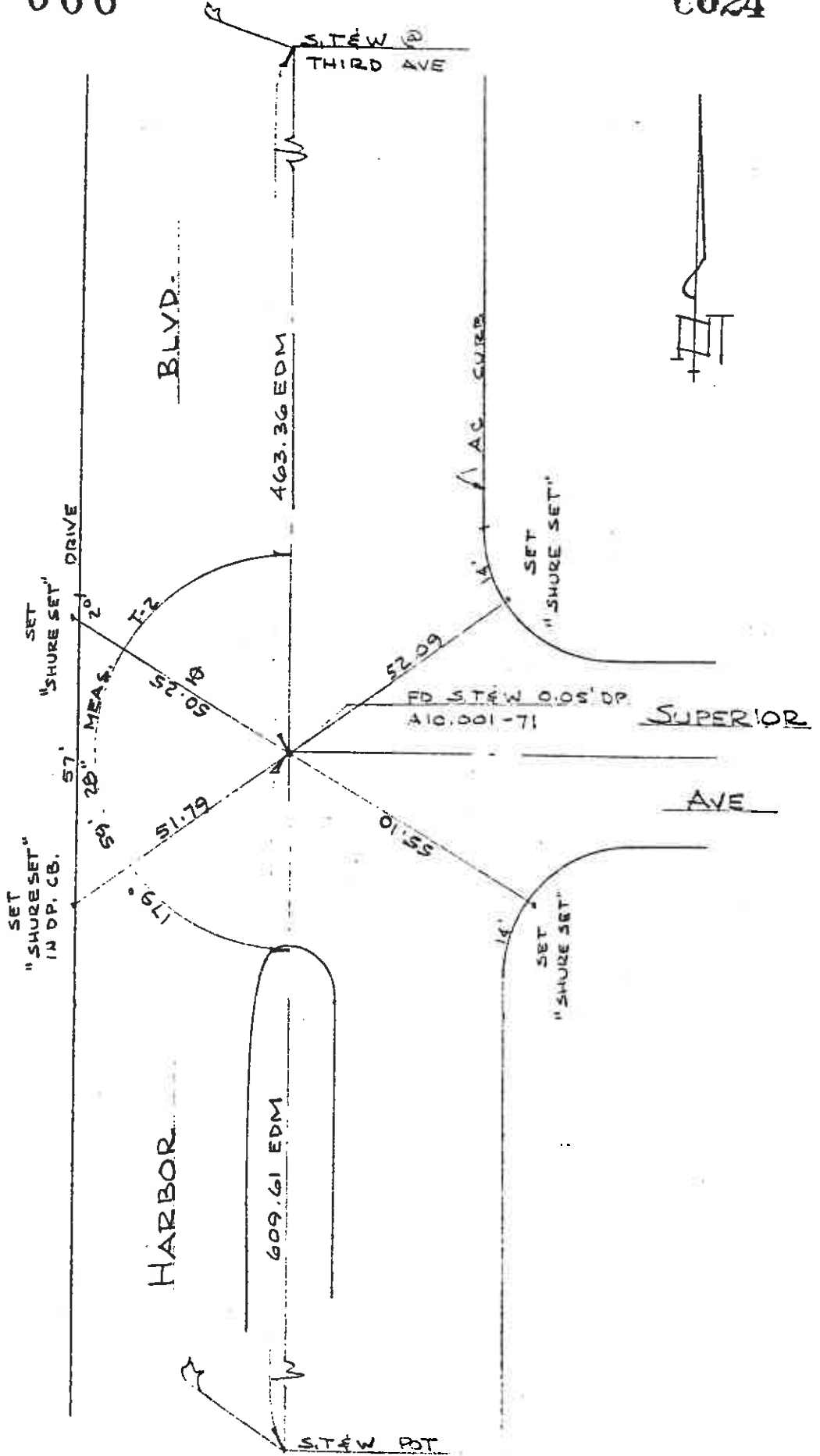
36

BLK 6448 MOD 49

78-066

TO PG 23

0024



TO PG 25

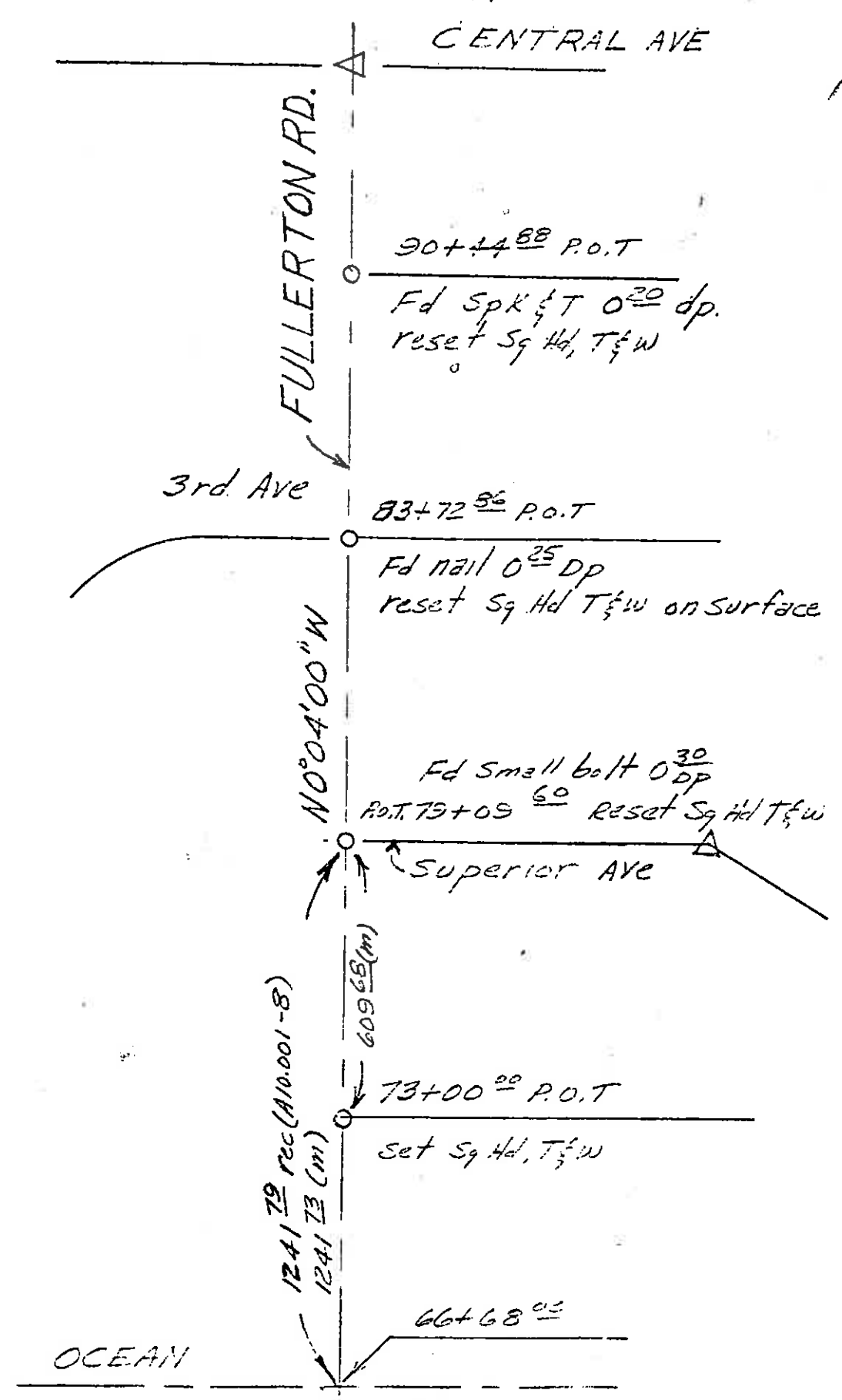
(2)

UKO C 26 11 01 01

4

See pg. 5

06770 MSJ/TI, 1/1/01



VII

4/50

Kisner & Piny

5

See pg. 5

see bottom pg 8

134+36<sup>06</sup> P.O.T.  
Fd C, Spk, T & W 0<sup>25</sup> dp  
reset Sq Hd, T & W on Surf.

109' (m)

STONEWOOD  
S 0° 31' 00" E

134+25<sup>20</sup> P.O.T.  
Fd Spk & W 0<sup>25</sup> dp  
Reset Sq Hd, T & W

132+44<sup>69±</sup>

Fd Spk & W 0<sup>25</sup> dp.  
(ORA Co A/3-10 pg 34)  
reset Sq Hd T & W on surface

WHITTIER BLVD

S 89° 58' 00" W

129+04<sup>21</sup> P.O.T.

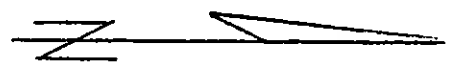
Fd C Spk & W 0<sup>25</sup> dp  
reset Sq Hd T & W on surface

125+83<sup>50</sup> A.H.D. =

124+11.65 P.O.T. BK.  
Nothing Fd, Nothing Set.

122+34<sup>95</sup> EC

B6448 M 98, 99



4/20

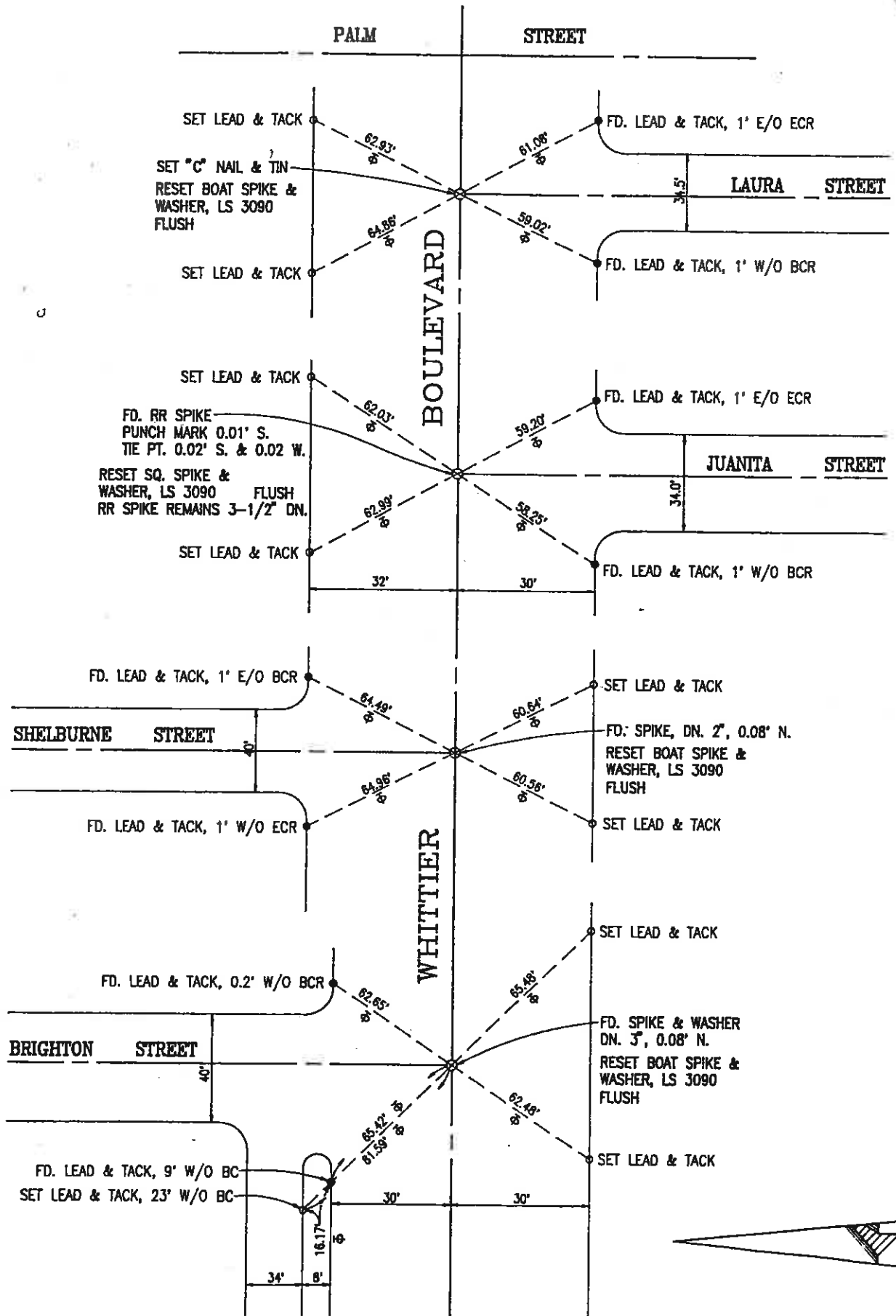
Resnik & P/hy

**ROBERT WADA & ASSOCIATES**

410 W. AMERIGE AVENUE, FULLERTON, CA 92632  
(714) 992-5481

CREW T. SUZUKI  
F. LERMA

JOB. NO. 1962  
DATE 4-2-93  
PAGE 1 OF 2

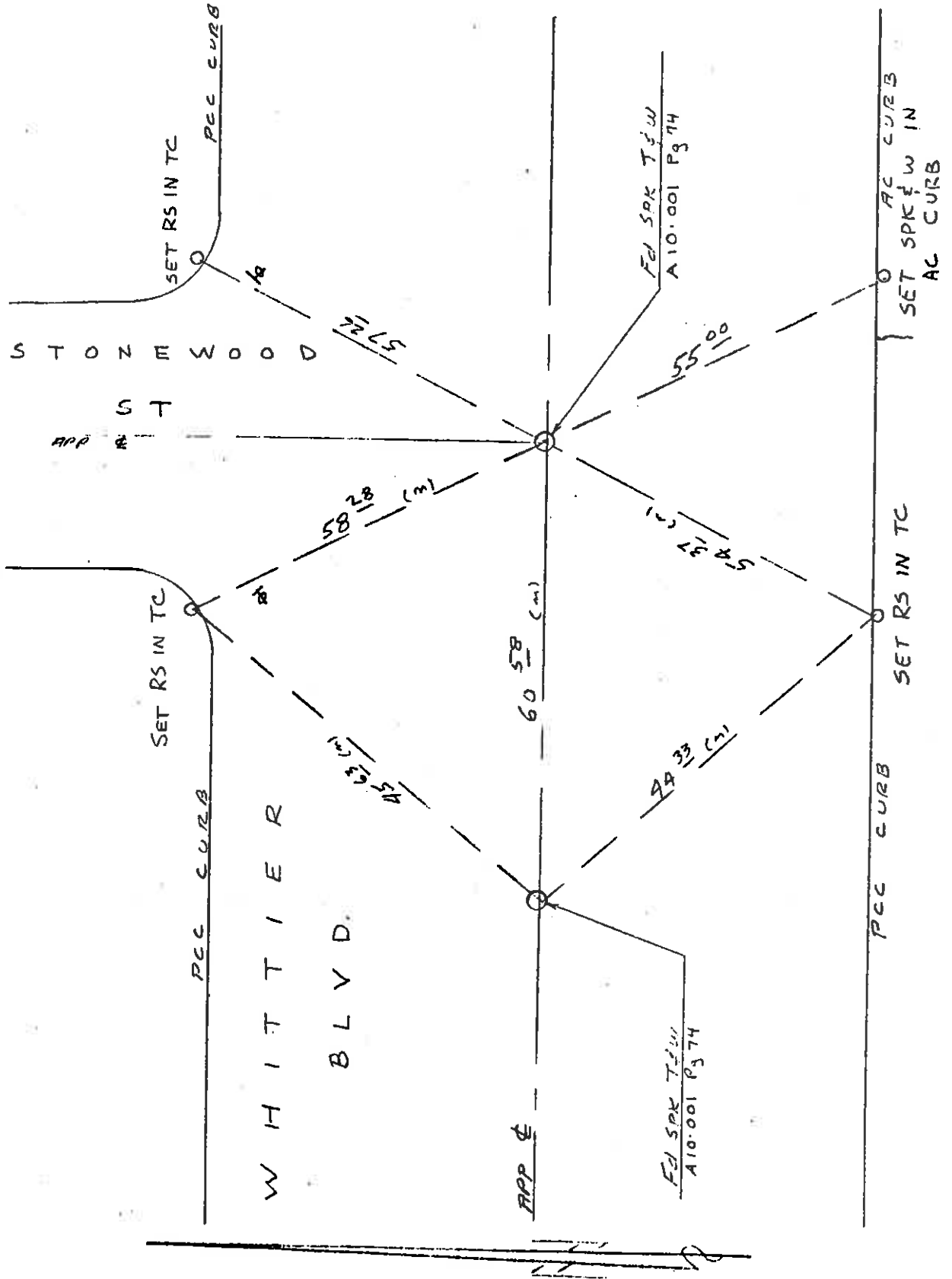


024 72 9.2/11.9  
07212 - 260021  
SUR R-9 #70-217

TIES @ WHITTIER  
AND STONEWOOD STREET

6-19-70  
ADAMS & PTY  
SULIS

21 24



AURUC20

002